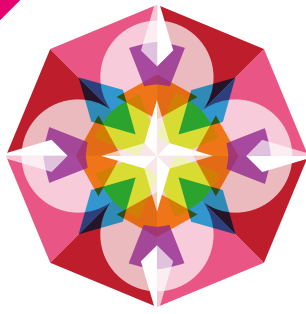


TERM
ONE



Brunswick South PRIMARY SCHOOL

imparare insieme ♦ creare insieme ♦ vivere insieme

WHAT'S INSIDE

LE NOTIZIE DI TOBY, 2/24
FOUNDATION, YR 1/2,
COMMUNITY NOTICES

Foundation



our values –
the moral fibre which
guides our culture
CONSTANT LEARNING
MUTUAL RESPONSIBILITY
COMPASSION
SENSE OF POSSIBILITY

*Brunswick South Primary School
has zero tolerance to child abuse
and actively works to respond to,
listen to, and empower children.*

9 february 2024 issue 1
NEWSLETTER

CALENDAR DATES FEBRUARY

Thurs 15-Fri 16 School Photos
Mon 19 School Council Meeting
Fri 23 Family Information Video
Live on Compass

MARCH

Mon 11 Labour Day Public Holiday
Tues 12 NAPLAN Commences
Mon 18 School Council Meeting
Tues 19 Student led Conferences 1-7pm
Students Dismissed at 12pm
Thurs 28 End of Term 1, 2.30 Dismissal

Tuesday 19 March
Student Led Conferences
Students Finish At 12pm

ASSEMBLY DATES

Mon 12 Feb YR 5/6 Hosting
Mon 26 Feb YR 3/4 Hosting
Mon 18 Mar YR 5/6 Hosting
Fri 28 Mar Foundation Hosting

LE NOTIZIE DI TOBY

We've hit the ground running to begin our 2024 school year! Our students have seamlessly transitioned into their new learning areas, and there is a feeling of SENSE OF POSSIBILITY around the school. Our students and teachers have been doing a wonderful job working together to create a safe and productive learning culture across the school. We are going to keep up the momentum and we can't wait to see all the great things we can achieve insieme this year!

Arrivederci Trevor!

We will have a special guest at our first whole school assembly next Monday! Trevor will be popping in to say a few words so make sure you come along if you would like to say goodbye in person.

Dogs in School Policy

One of our primary priorities at BSPS is the wellbeing and safety of our students and others in the BSPS community. We acknowledge the vital role that pets (especially dogs) play in the lives of many of the families at BSPS, however we do have some clear guidelines in place to ensure that everyone feels safe and comfortable when there are dogs on school grounds.

Please ensure that all dogs entering Brunswick South PS are on **short leads** (not extendable leads) that are **controlled by an adult**, not by a child. We also ask that dogs remain on **asphalt areas** and not on the synthetic grass and line up areas.

More details on the conditions for bringing dogs onto school grounds can be found in our Dogs in Schools Policy on our [website](#).

School Council

We have our first School Council meeting for 2024 next week. It will be the last meeting with our 2023 council members and the focus of the meeting will be endorsing our subcommittee action plans for 2024 and approving many of the school's operational and financial policies for the new year. Shortly we'll begin the nomination process

for our new School Council, with a few positions becoming available and I encourage those parents and carers who are interested to consider nominating. We'll communicate the timeline for this process shortly – stay tuned.

Class Carers

Our Class Carers for 2024 have been finalised and thank you to those parents who have taken on the role to support home/school communication at BSPS. They will be in touch shortly (if not already) with some information about their role and opportunities for families to interact more in person this year. Thank you to Cordelia Schuab-Russell, Caitlin Williams, Ben Strong and Sharon Trinchi, for taking on this role at BSPS and strengthening active participation in our school learning community.

School/Home Communication

To help you get to know your child's teachers and learning areas and see what fantastic work they've been up to, we have the following in place:

1. Learning Area Information Video: Sessions will be recorded and distributed by each year level on the **Friday 23 February** onto Compass. You will still have the opportunity to clarify any questions or wonderings with teams either in person at pick up and drop off, or via email or phone.

2. Student Learning Conferences: These have been booked to occur on **Tuesday 19 March** from 1.00-7.00pm. Students will attend school in the morning 9:00 am -12:00, and the afternoon times will be scheduled in for these meetings. The purpose of these sessions is to allow our students to lead a discussion about their learning with you and an opportunity for parents, students and teachers to discuss this.

3. Newsletter: For those families new to the school, our newsletter is released fortnightly on a Friday. The newsletter shares and celebrates all the fantastic learning from our junior and senior learning areas, community announcements and a wrap up from leadership about the highlights of the fortnight. Mary does a fantastic job putting it all together and making it easy on the eye!

Annual Privacy Reminder for 2024

Our school collects, uses, discloses and stores student and parent personal information for standard school functions or where permitted by law, as stated in the Schools' Privacy Policy. Please take time to remind yourself of our school's collection notice, found on our [website](#).

Collecting Kids After School

At 3:30pm, students will wait with their learning group and teachers outside their learning area. At **3:45pm**, any students who have not been collected will wait at the office and families will be called. After **4:00pm**, the office may not be attended, so kids may be sent for supervision at **Team Kids**.

See you at assembly on Monday!

Have a great weekend.

Toby

FOUNDATION

Foundation have been at school for 6 days!!

Our Learning to Learn program has helped us all understand how to line up, what we should eat at fruit time, what lunch means, packing our bags, finding our way around the school, making new friends and finding lineups when the music plays! We are brave and strong!

We are learning to work with others and to complete a task using three-star colouring and not giving up! We are trying really hard to stay in our seats, and to put up our hands when we want to share. We have had our first Specialist sessions with STEM, Teatro, Artè and Sport.

We are slowly settling into a rhythm and establishing our rituals and routines. Some shared opinions from our little learners...what do you think about school? Teddy C, said "I love learning." and Reina, "Playing with my friends."



Benvenuti to our 1/2 Community!

We have had a wonderful start to our school year!

This term we are exploring the topic of Community.



We have begun by talking about the people and places that are in our community and our favourite places to visit. We know that there are important people we can call in an emergency who can help us.

We also began talking about how to use a map and what a compass is! We learnt about north, south, east and west and used this language to find locations on our map.



In the upcoming weeks we will go on local excursions to explore our community. We can't wait!

Zones of Regulation in 1/2



In our first 2 weeks of our Learning to Learn Program, we have been focusing on fostering a positive and supportive learning environment. During this time, our 1/2 classes have delved into the Zones of Regulation, a framework designed to help students develop emotional awareness and regulation skills. Through engaging activities and discussions, we've explored the various zones together, empowering our young learners to understand and express their emotions effectively.

This foundational work sets the stage for a harmonious and conducive learning atmosphere where each child can thrive. We appreciate your partnership in promoting emotional intelligence and look forward to continued growth and success throughout the school year.

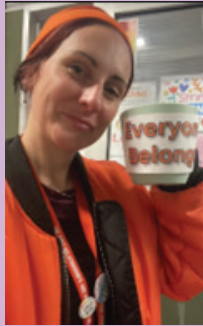
If you happen to find a breathing technique in your child's bag, please check with them what it is and why they might use it for?

YEARS 1/2

HEALTH AND WELLBEING

Hello BSPS community,

I wanted to introduce myself to our new members of our school community. My name is **Caro** and I have two roles at BSPS.



One of these is the **Mental Health and Wellbeing Leader**. This role is part of a program designed to **build the capability of the whole school** with regard to mental health and wellbeing (identification, promotion and prevention), **provide support to staff** to better identify and support students with mental health needs, **establish clear pathways** for referral for students requiring assessment and intervention, and **monitor and evaluate** student progress. The role was specifically established to support teachers in the classroom and to provide a crucial link to resources external to the school.

The MHWL role is quite different to a Student Support Services officer or psychologist – it is not a clinical role and is not designed for direct intervention (counseling). The role is seen as a key conduit in 'getting a child to care' once a teacher or other staff member identifies a concern in the classroom.



My other role is the **Health and Wellbeing Specialist!** I am teaching Health and Wellbeing in Foundation, Year 3/4 and 5/6. This term, Tessa will be teaching Health and Wellbeing to Year 1/2 students. We are really excited to help build our students emotional literacy, and understanding of how to be kind, fair and respectful.

I look forward to meeting you and helping build our whole school approach to mental health and wellbeing together! Please reach out if you have any further questions or would like to chat.

Fostering and Building Our Emotional Vocabulary

At BSPS we promote student empowerment to articulate their feelings and emotions. We do this through the Zones of Regulation.

Here is some information about the Zones. It can be helpful for your child to identify what zone they are in and if they need support with managing it.

THE FOUR ZONES: OUR FEELINGS & STATES DETERMINE OUR ZONE

The **Red Zone** is used to describe extremely heightened states of alertness and intense emotions. A person may be elated or experiencing anger, rage, devastation, or terror when in the Red Zone.

The **Yellow Zone** is also used to describe a heightened state of alertness and elevated emotions, however one has more control when they are in the Yellow Zone. A person may be experiencing stress, frustration, anxiety, excitement, silliness, the wiggles, or nervousness when in the Yellow Zone.

The **Green Zone** is used to describe a calm state of alertness. A person may be described as happy, focused, content, or ready to learn when in the Green Zone. This is the zone where optimal learning occurs.

The **Blue Zone** is used to describe low states of alertness and down feelings such as when one feels sad, tired, sick, or bored.



COMMUNITY NOTICES



COASIT

Italian Assistance Association Melbourne

<https://www.coasit.com.au/>



nelsonalexander.com.au
205 Brunswick Street, Fitzroy



Is this your daughter?

Look no further than the Australian Girls Choir because we encourage, challenge and inspire girls as they learn to sing, dance and perform.

Join us at our
FEBRUARY OPEN DAY



Friendly Moving Men

High quality, affordable, local removals



<https://friendlymovingmen.com.au/>



Scan Me!

matsumoto
japanese restaurant

48 Lygon St, Brunswick East VIC 3057
(03) 9380 9288 | www.matsumoto.com.au | info@matsumoto.com.au

BRIDGE ROAD BREWERS

<https://bridgeroadbrewers.com.au/>

WANT TO JOIN THE FUN?



FREE COME & TRY, SOCIAL SOCCER
WOMEN, GIRLS & GENDER-DIVERSE PEOPLE
AT BRUNSWICK CITY SOCCER CLUB

AGES 16 - ADULT:



AGES 5 - 12:



AUSTRALIAN CAMPS ASSOCIATION
PEOPLE OUTDOORS
Adventure for all



PEOPLE OUTDOORS

**CAMPS FOR
PEOPLE LIVING
WITH DISABILITY**

Adventure for All!

COMMUNITY NOTICES

BRUNSWICK SOUTH TEAMKIDS NEWSLETTER



WHAT'S BEEN HAPPENING

Welcome back everyone! And an even bigger welcome to our brand new Preps! We hope you had an amazing holiday break!

We are off to a flying start this term. Our new Preps are settling in wonderfully, thanks to some amazing older children showing them around and being their buddies.

We are setting new expectations and boundaries in our service currently. We are also trialling our new 'TK Restaurant' as a new and fun way to serve our team afternoon tea.

In the coming weeks we will be having a Teddy Bear Picnic on Tuesday 13th. Please bring along your Teddy and join us for a beary exciting day.

This week we provided our terrific teachers a morning tea to show our shared appreciation of their hard work and dedication to the school. The children crafted 'Thank You' messages to their teachers as a token of their gratitude and the positive impact the staff have on the children.

TEAMKIDS CLUBS ASC WEEK: 1 & 2

MONDAY

Club sign up

TUESDAY

Club sign up

WEDNESDAY

Club sign up

THURSDAY

Club sign up

FRIDAY

Club sign up

IMPORTANT DATES

Tue 13th February

Teddy Bear Picnic

WED 14th February

Valentines Day

WED 21st February

Pancake Day



It's Party Time! **YOU'RE INVITED!**

WEEK 2

TEDDY BEARS PICNIC

WEEK 4

PANCAKE DAY

WEEK 3

Random Acts of Kindness Day

WEEK 5

WORLD WILDLIFE DAY

WEEK 9

Mad Hatter's Tea Party

YOU ARE INVITED

WEEK 6

CLEAN UP AUSTRALIA DAY

WEEK 8

HAPPY EARTH HOUR

DON'T MISS OUT! BOOK TEAMKIDS.COM.AU

Service Mobile: 0439 283 509

Office Phone: 1300 035 000

Service Email: brunswicksouthtps@teamkids.com.au

Office Email: info@teamkids.com.au

AFTER SCHOOL SOCCER PROGRAM FOR TERM 4!

JOIN OUR AFTER SCHOOL SOCCER PROGRAM! A WEEKLY PROGRAM OPEN TO ALL SKILL LEVELS AND ABILITIES. BOOK NOW TO SECURE YOUR SPOT!

HEAD TO OUR WEBSITE FOR MORE INFORMATION!



'DEVELOPMENT & FUN THROUGH SOCCER'

JOIN NOW!

strikesoccerschool.com | strikesoccerschool@gmail.com

