



Brunswick South
PRIMARY SCHOOL

imparare insieme ♦ creare insieme ♦ vivere insieme



15TH OCTOBER 2020

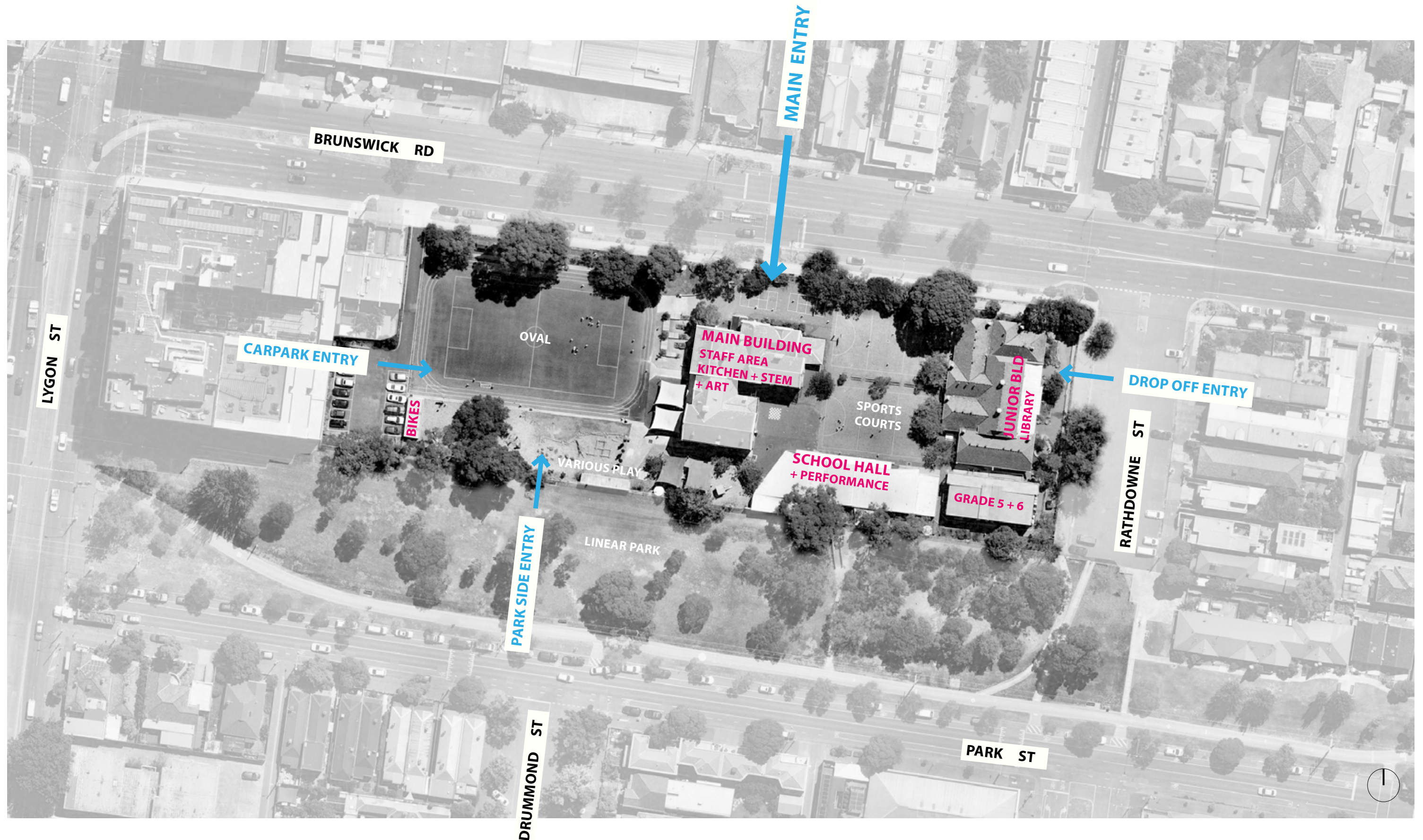
BRUNSWICK SOUTH PRIMARY SCHOOL MASTERPLAN

SEARLE X WALDRON
ARCHITECTURE



EXISTING CONDITIONS

SITE + CONTEXT



EXISTING CONDITIONS

EXTERIOR



HALL + PERFORMANCE FACING NORTH



UNEVEN ENTRY FROM SPORTS COURTS INTO MAIN BUILDING



EAST SIDE OF MAIN BUILDING



MAIN ENTRY TO MAIN BUILDING + STAFF AREA



SPORTS COURTS + JUNIOR BUILDING WEST FACADE



SOUTH APPEARANCE FROM LINEAR PARK

EXISTING CONDITIONS

INTERIOR



ART ROOM SOUTH OF MAIN BUILDING



ENTRY INTO MAIN BUILDING + RECEPTION



MAIN BUILDING CLASSROOM



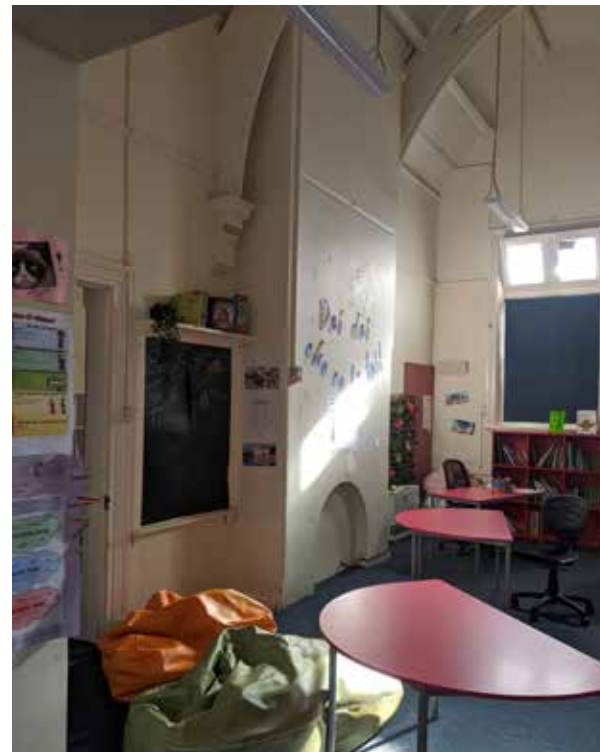
EAST ENTRY TO JUNIOR BUILDING



LIBRARY AT CENTRE OF JUNIOR BUILDING



HALL CONNECTION



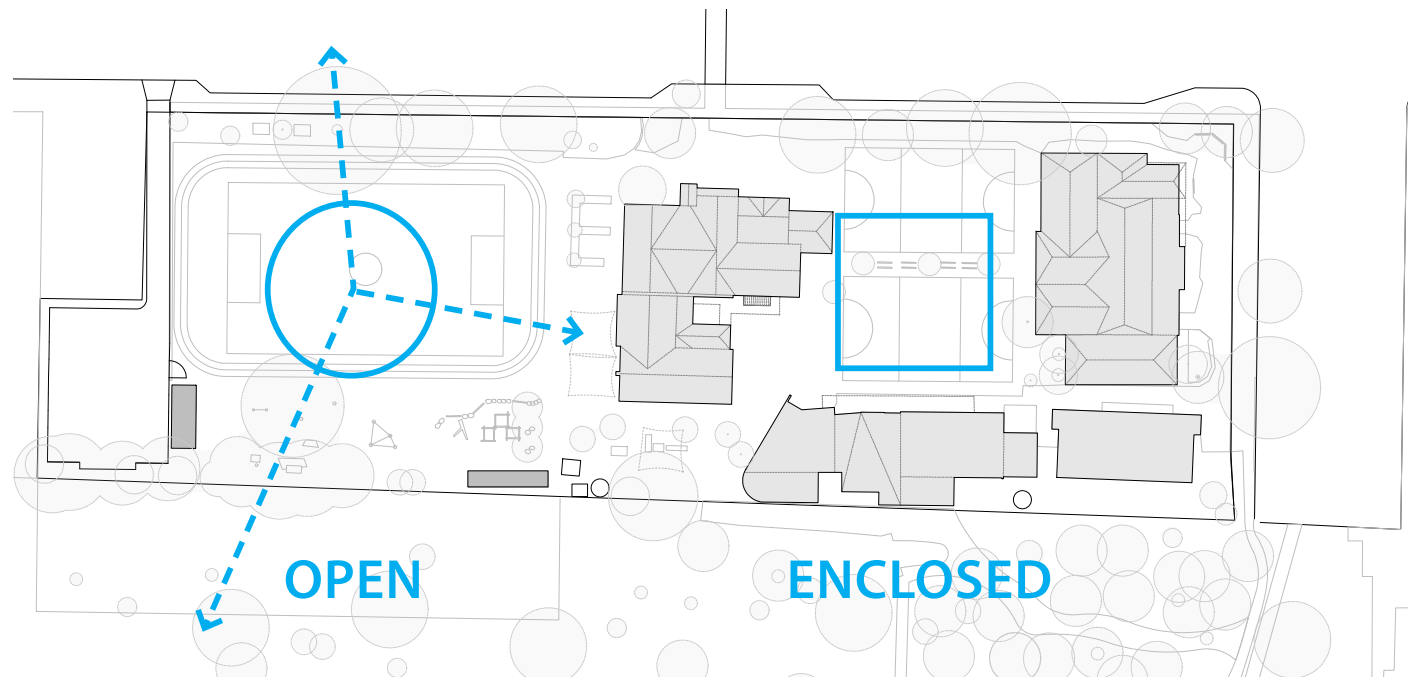
MAIN BUILDING LEVEL 2 CLASS ROOM



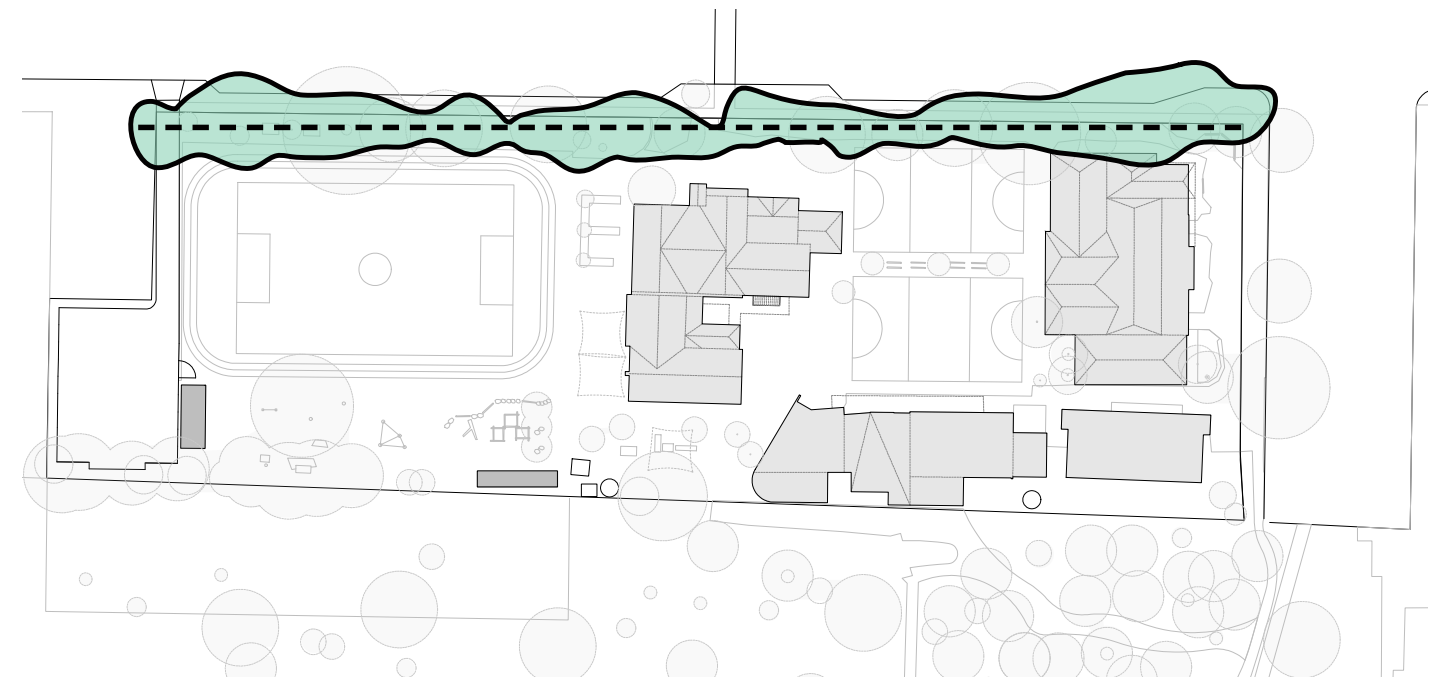
STEM ACTIVITIES IN MAIN BUILDING

EXISTING CONDITIONS

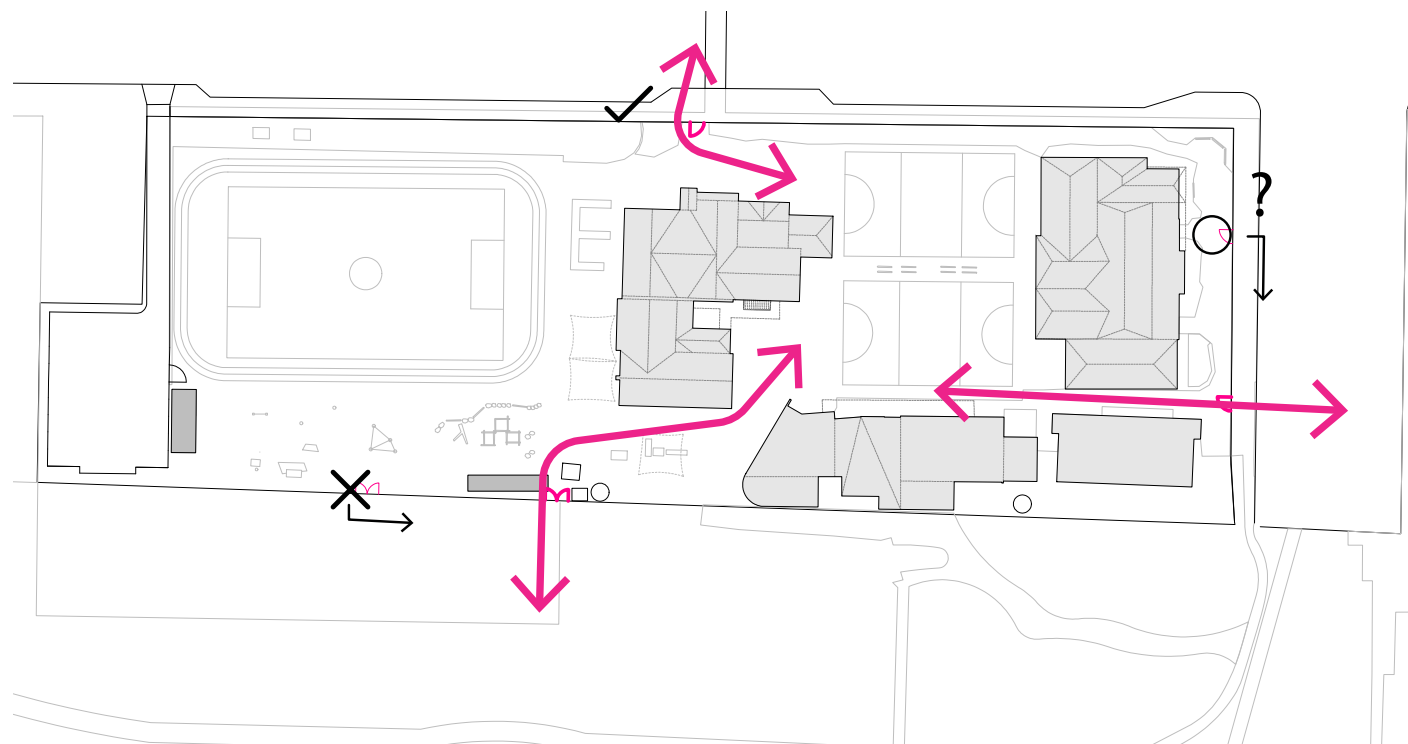
OPPORTUNITIES + STRATEGIES



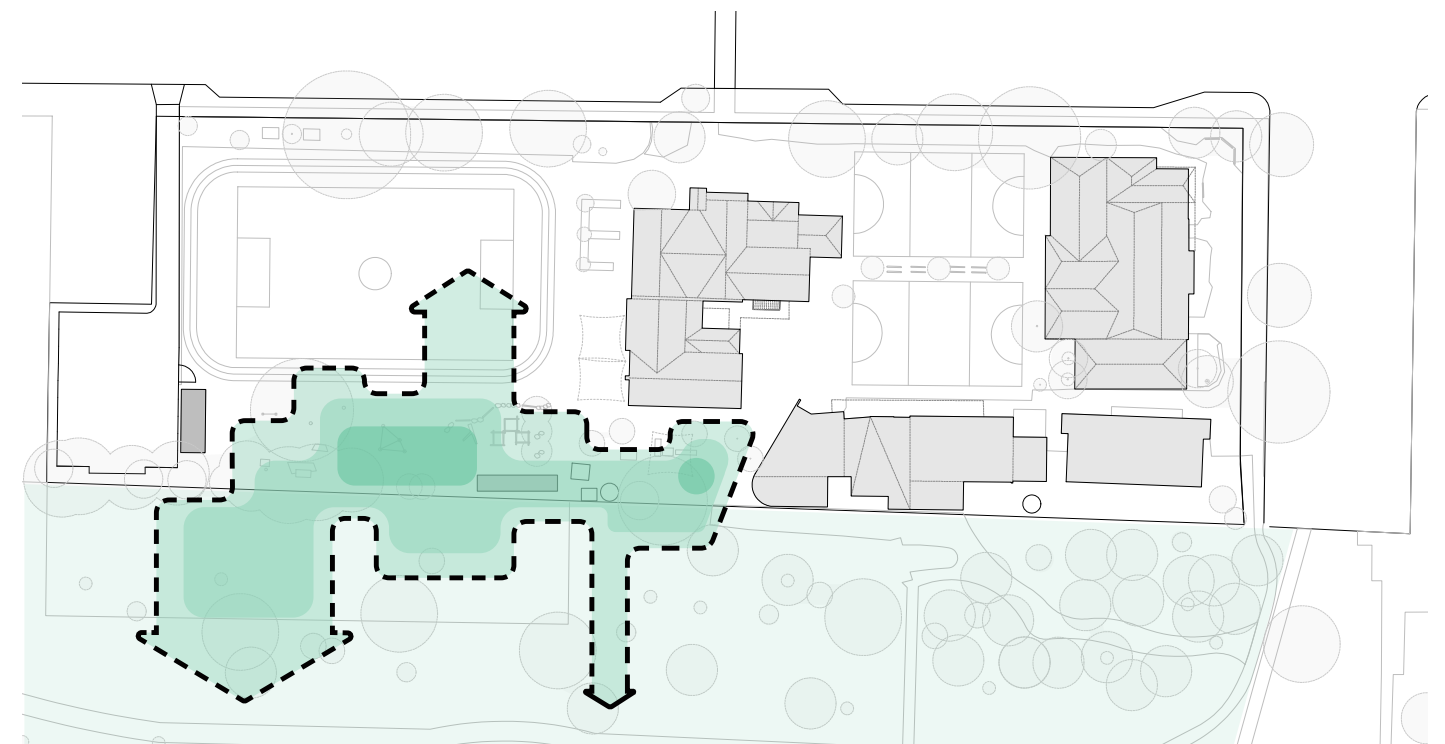
COMMUNITY
OPENING UP TO THE COMMUNITY + EMPHASISING COURT YARD



BUFFER
GREENING TO THE STREET FOR PRIVACY



CENTRALISED ENTRY
SHIFTING THE ENTRY POINTS TO CREATE A BETTER SENSE OF ARRIVAL AND CIRCULATION



FILTER
BLURRING EDGES OF THE SCHOOL BOUNDARY TO OPEN UP TO PUBLIC.

NEW FRONTAGE + CIRCULATION

OPPORTUNITIES + STRATEGIES DEVELOPMENT



NEW INTERVENTIONS TO ORIENTATE TOWARDS PARK



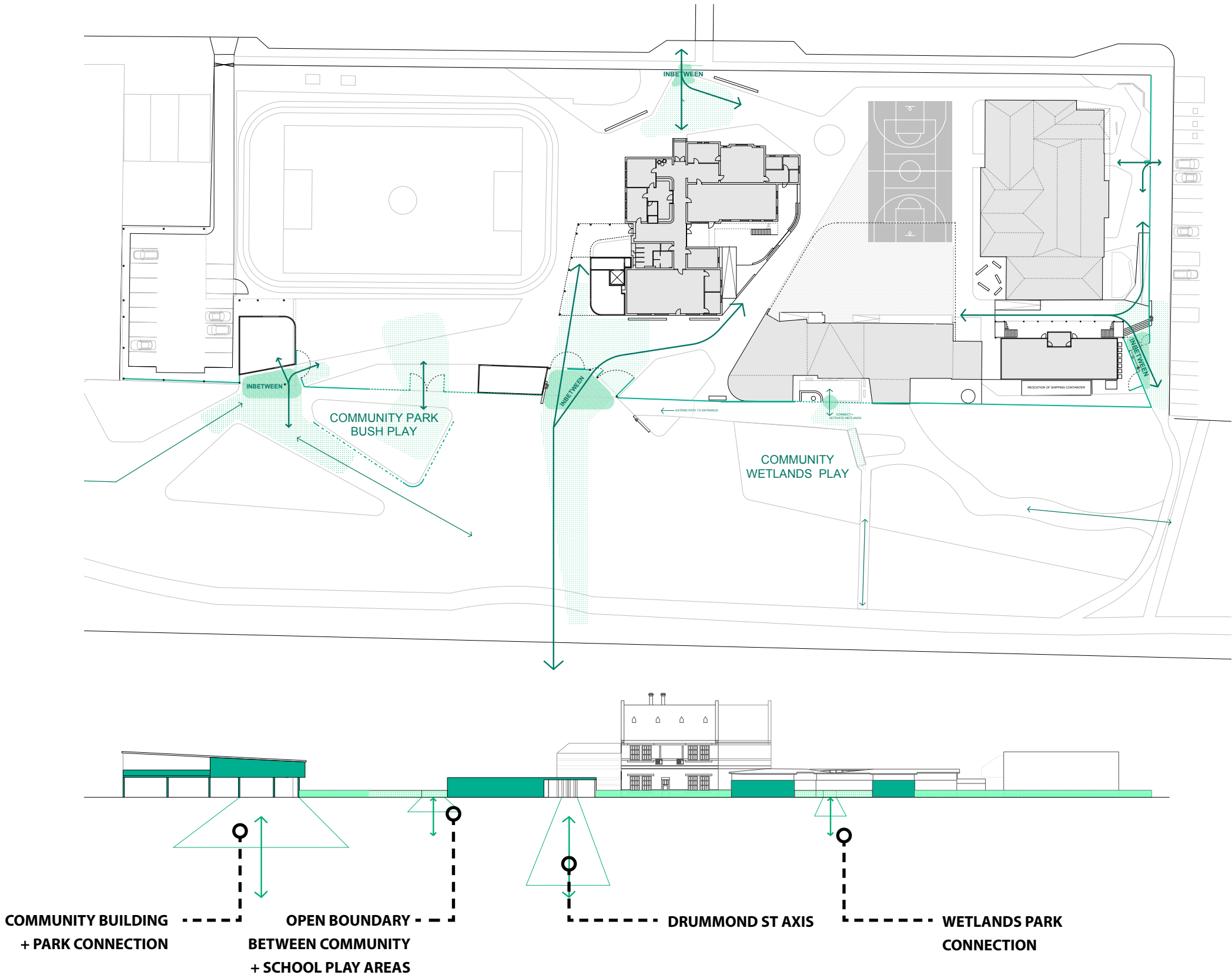
ACTIVATE BACKDROP TO THE PARK



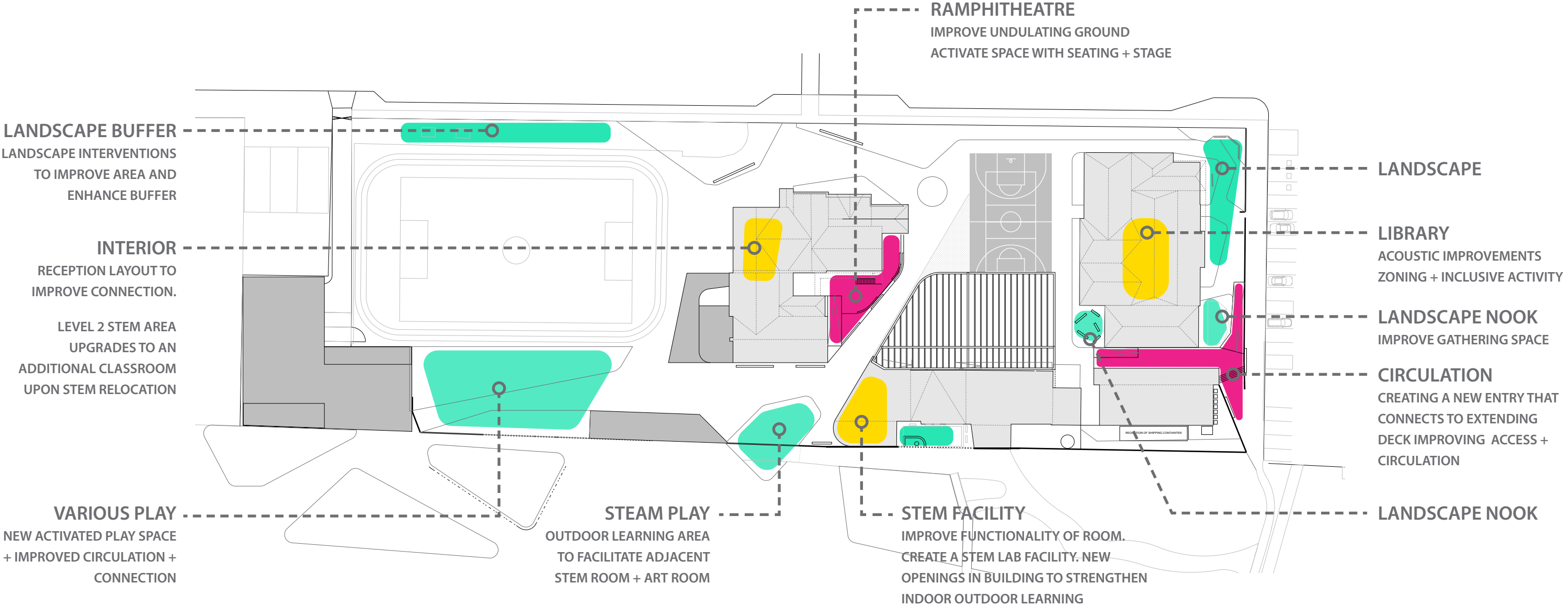
BLUR EDGES + GENERATE POROSITY TO CREATE AN INVITING ZONE WHERE SCHOOL + COMMUNITY MEET



CONNECT TO EXISTING PARK CONDITIONS + NETWORKS



INTERVENTIONS: SML + M



RAMPHITHEATRE - INFORMAL OCCUPATION, LEARNING, PERFORMING



INTEGRATED SEATING



INTEGRATING INDOOR - OUTDOOR LEARNING

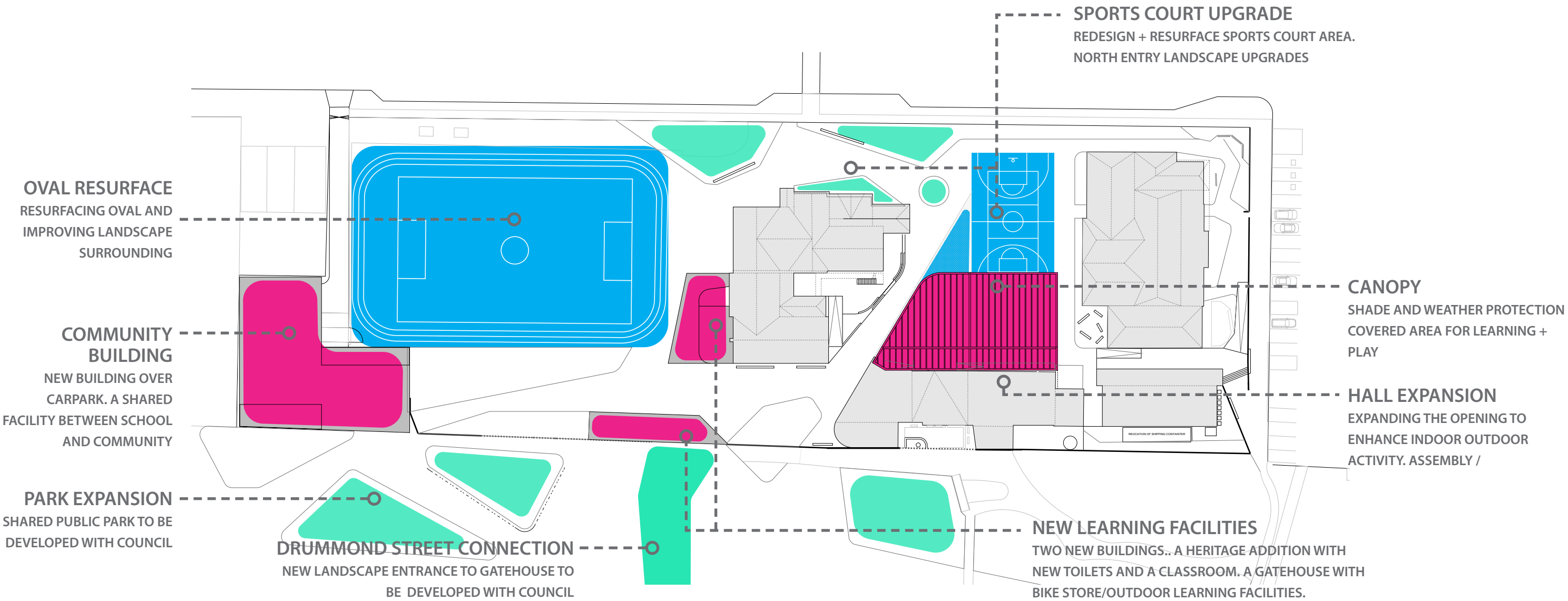


PLACE MAKING WITH SMALL LANDSCAPE INTERVENTIONS



OUTDOOR AREAS ENCOURAGING GATHERING / PERFORMANCE / PLAY

INTERVENTIONS: LRG



SHIFTING BOUNDARIES AT THE ENTRIES TO CREATE AN INVITING IN-BETWEEN ZONE



NEW BUILDINGS TO HINT AT HERITAGE LANGUAGE WHILST CONTRASTING THROUGH MATERIALS



COLOURFUL WEATHER PROTECTION AND SHADING

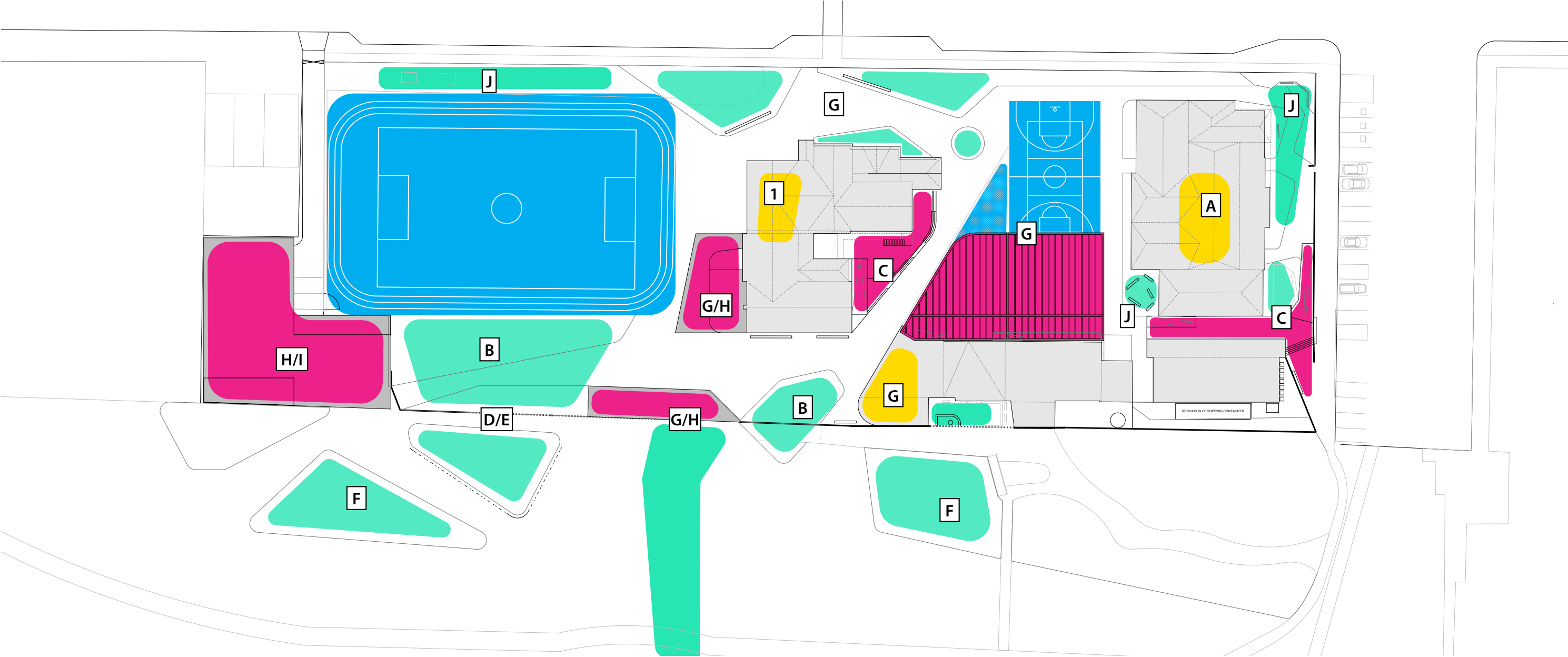


NATURE PLAY LANDSCAPING - IMAGINATIVE AND ADVENTURE PLAY



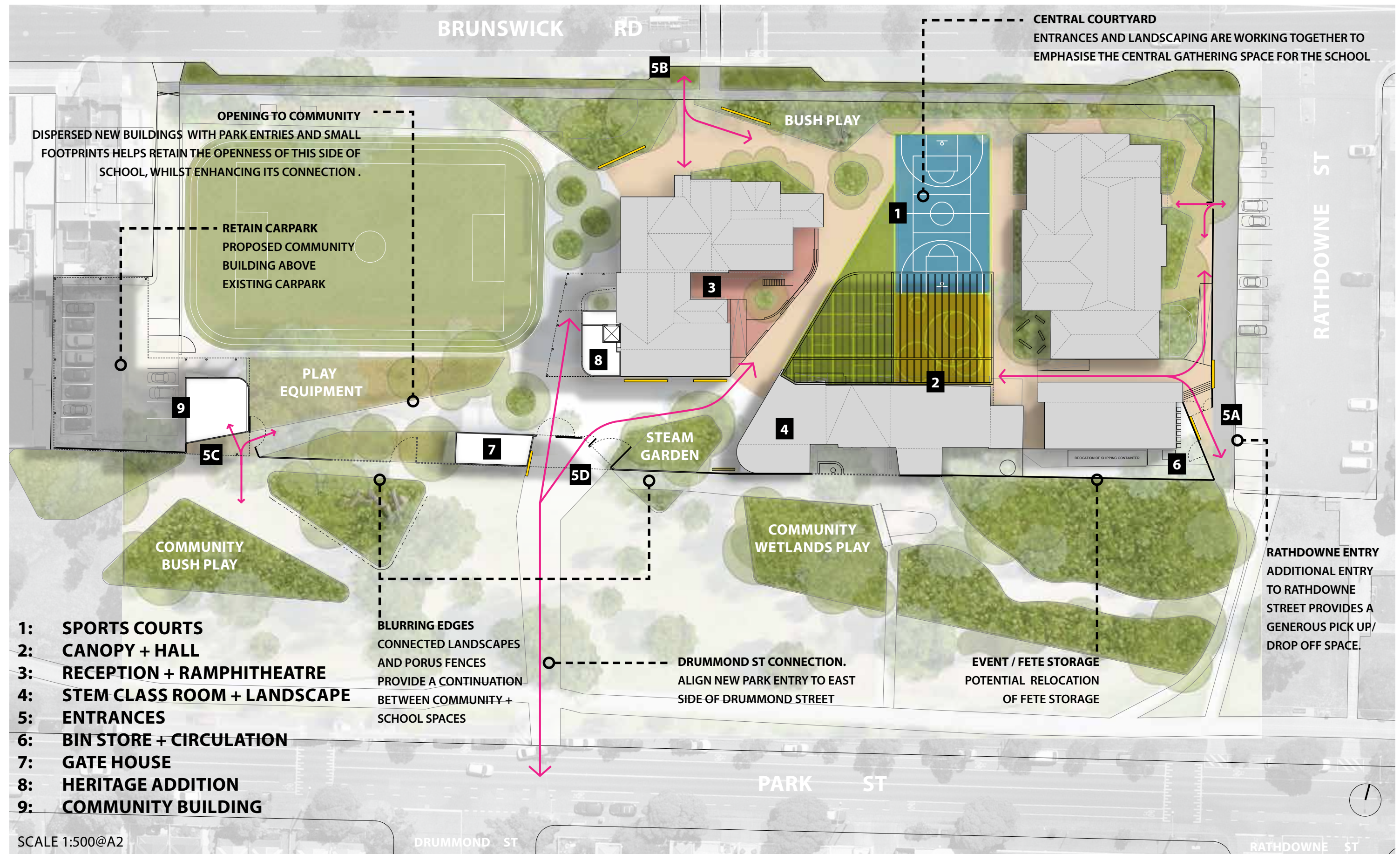
SUPER GRAPHIC TREATMENTS FOR PLAY AND LEARNING

GRANT OPPORTUNITIES

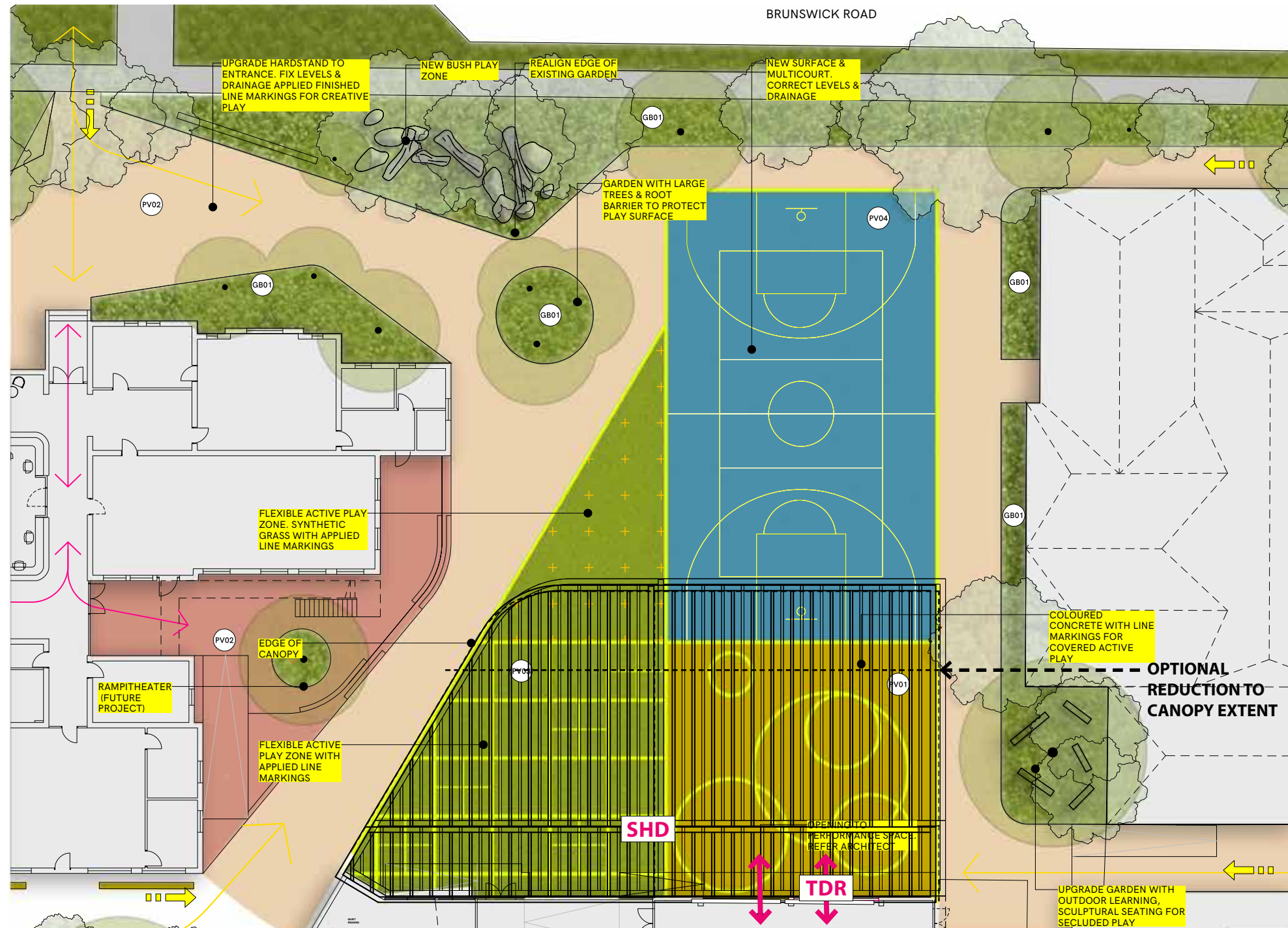


- A: INCLUSIVE SCHOOLS FUND - INDOOR LEARNING
- B: INCLUSIVE SCHOOLS FUND - PLAYGROUNDS
- C: ACCESSIBLE BUILDINGS PROGRAM
- D: ECOLITERACY GRANT
- E: MERRI CREEK ENVIRONMENT FUND
- F: THE WOODY MEADOW PROJECT PARTNERSHIP WITH UNIVERSITY OF MELBOURNE
- G: MINOR CAPITAL WORKS PROJECT
- H: MAJOR CAPITAL WORKS PROJECT
- I: SHARED FACILITIES FUND
- J: SAUSAGE SIZZLE PROJECT

MASTERPLAN



1 SPORTS COURTS



LEGEND

- EXISTING TREE
- PROPOSED TREE
- GARDEN BED, 300MM CULTIVATED SUBGRADE, 150MM IMPORTED SOIL, 75MM ORGANIC MULCH
- COLOURED CONCRETE WITH PAINTED LINE MARKINGS, VARIOUS COLOURS
- COLOURED CONCRETE
- SYNTHETIC TURF, TIGER TURF'S MULTI-SPORT SYNTHETIC, LONG PILE, GREEN
- COLOURED MULTICOURT, REBOUND ACE ACRYLIC HARDCOURT, SYNPAVE COLOUR WITH LINE MARKINGS

TDR ADDITIONAL TILT DOOR TO THE EAST. NEW OPENING, LINTEL & GLAZED TILT DOOR (TO MATCH EXISTING) APPROX 4.8M WIDE X 3M HIGH. (OPTIONAL)

SHD STEEL FRAMED SHADE STRUCTURE. PAINTED STEEL FRAME. WATERPROOF SHADE CLOTH FABRIC. SERGE FERRARI 502(S) OR SIMILAR. TOTAL 505M² (APPROX 293M² FIXED AND 212M² RETRACTABLE)



SUPER GRAPHIC TREATMENTS FOR PLAY AND LEARNING



NEW BRIGHT COLOUR COURT SURFACE

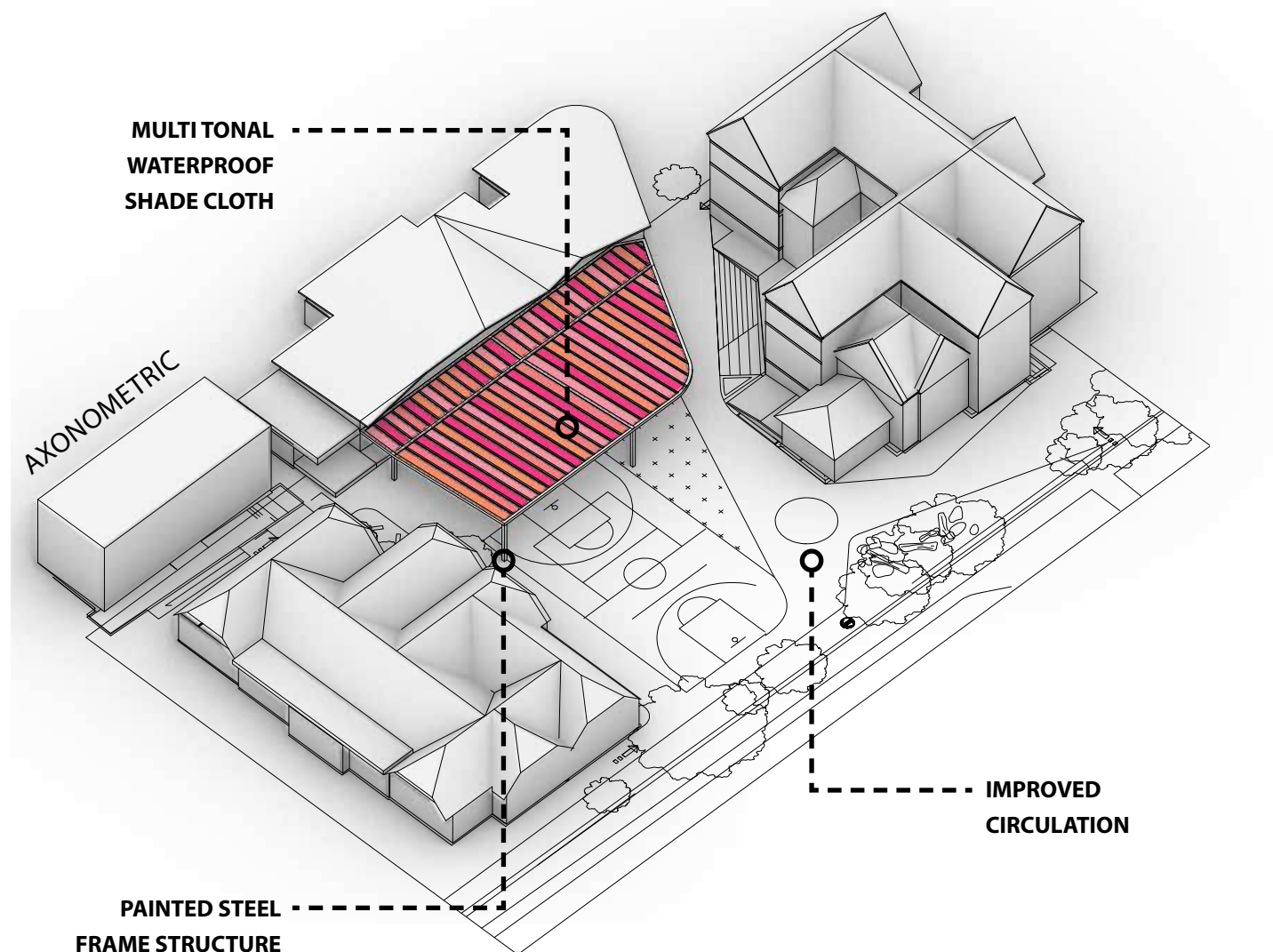


COLOURFUL WEATHER PROTECTION AND SHADING

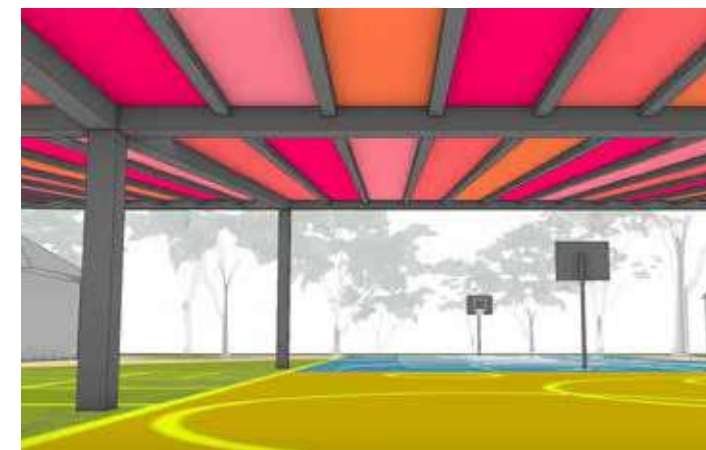


NATURE PLAY LANDSCAPING - IMAGINATIVE AND ADVENTURE PLAY

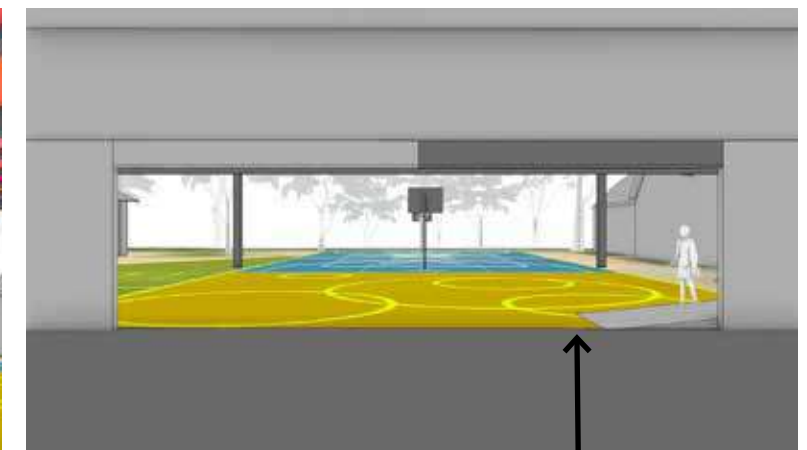
2 SHADE CANOPY



LIFTED CANOPY CREATES NEW COURTYARD EDGE

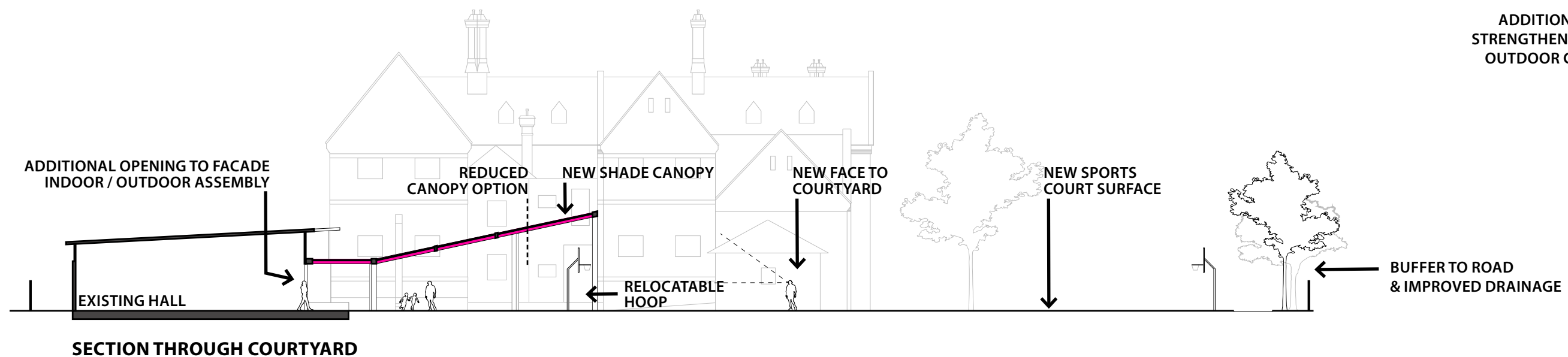


CANOPY FRAMES CONNECTION INTO COURTYARD

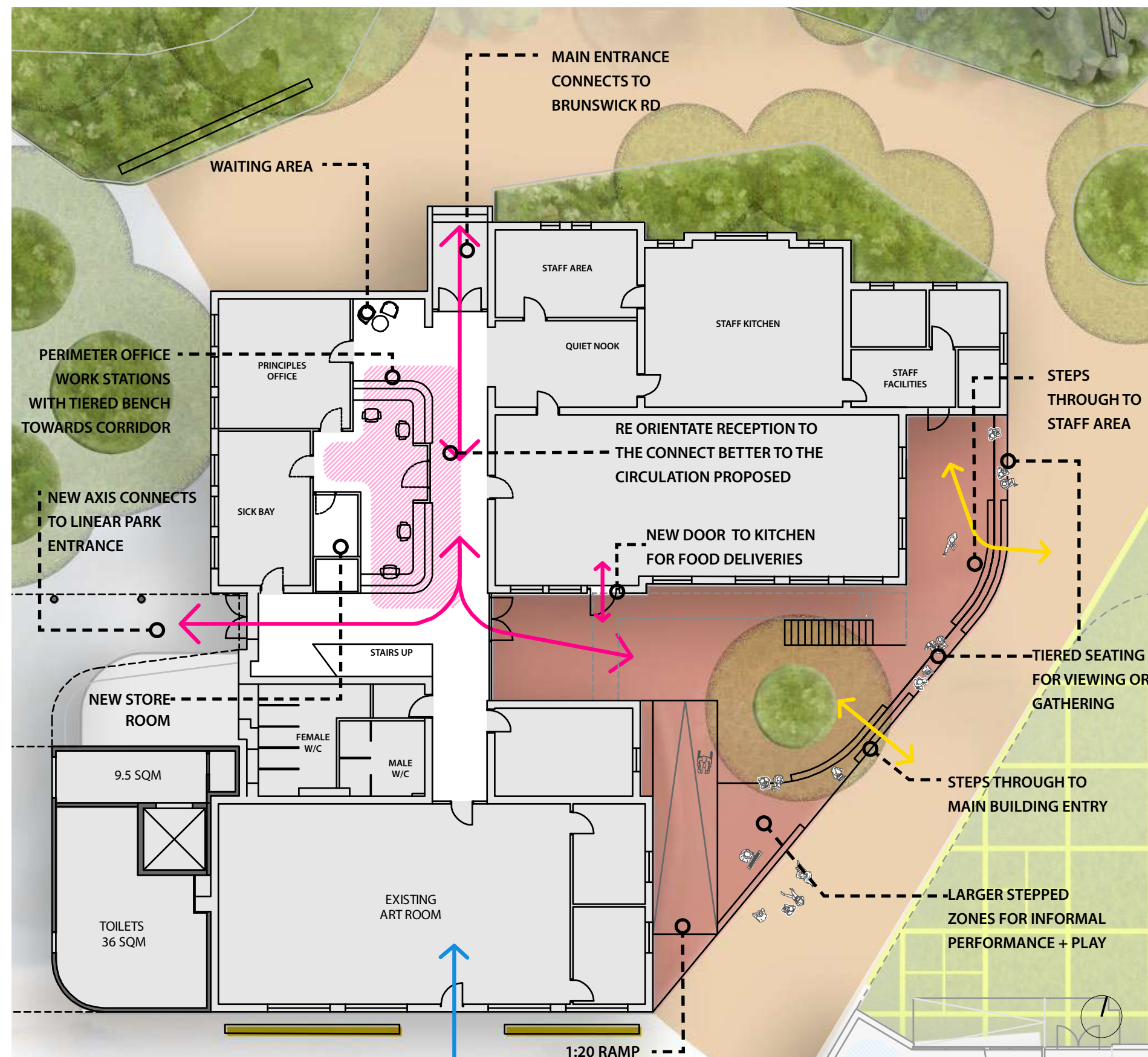


INSIDE HALL LOOKING OUT

ADDITIONAL OPENING
STRENGTHENING INDOOR
OUTDOOR CONNECTION



3 RECEPTION + RAMPHITHEATRE



RAMP + THEATRE



STEPPED ZONES OF PLAY

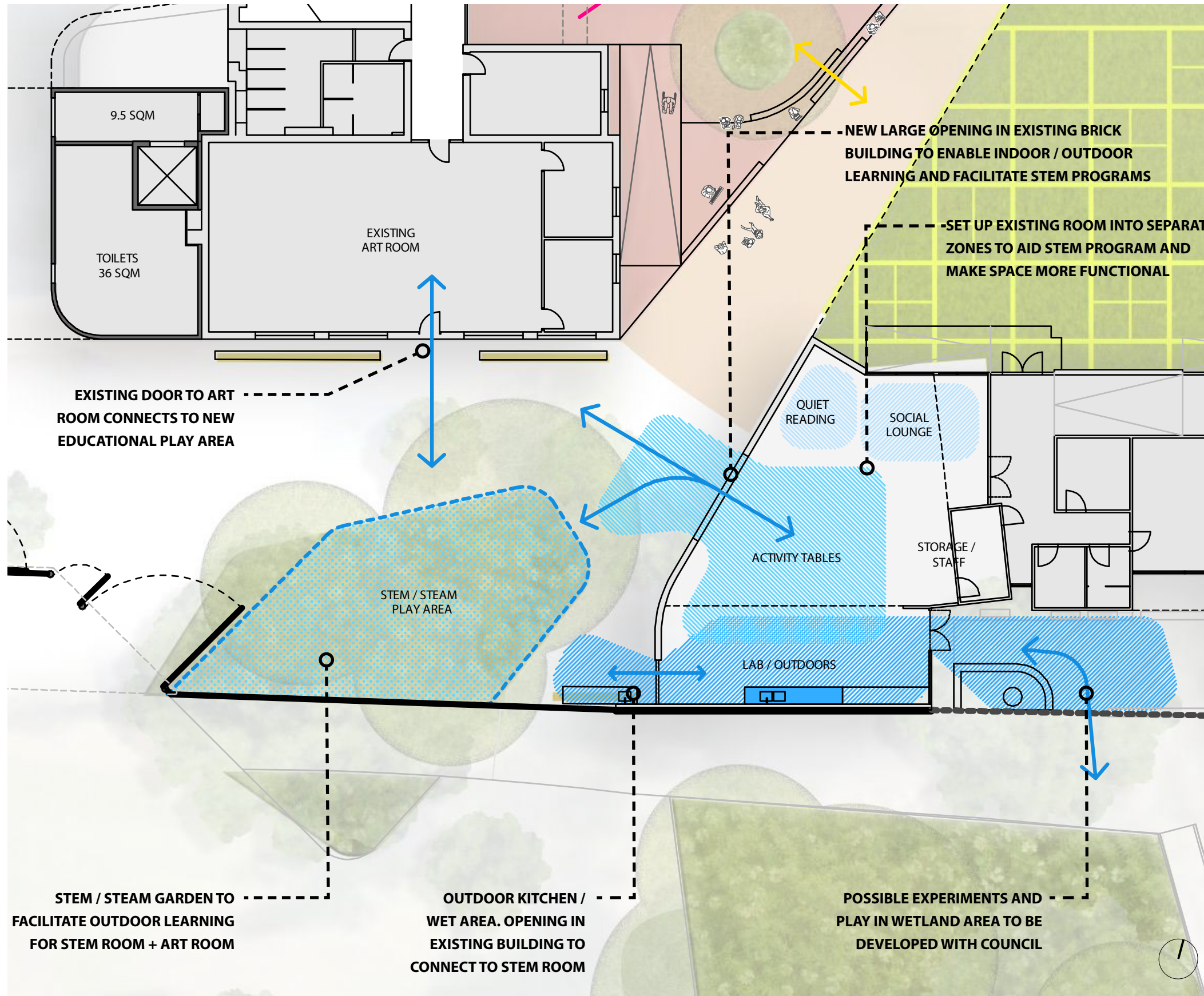


LANDSCAPE + ARCHITECTURE WORKING TOGETHER TO ACHIEVE COHERENT CIRCULATION



RAMPHITHEATRE ACTIVATED AS A STAGE WHILST AUDIENCE TAKE SHELTER UNDER CANOPY

4 STEM SPACES



ENCOURAGE SYNTHESIS BETWEEN INDOOR AND OUTDOOR LEARNING

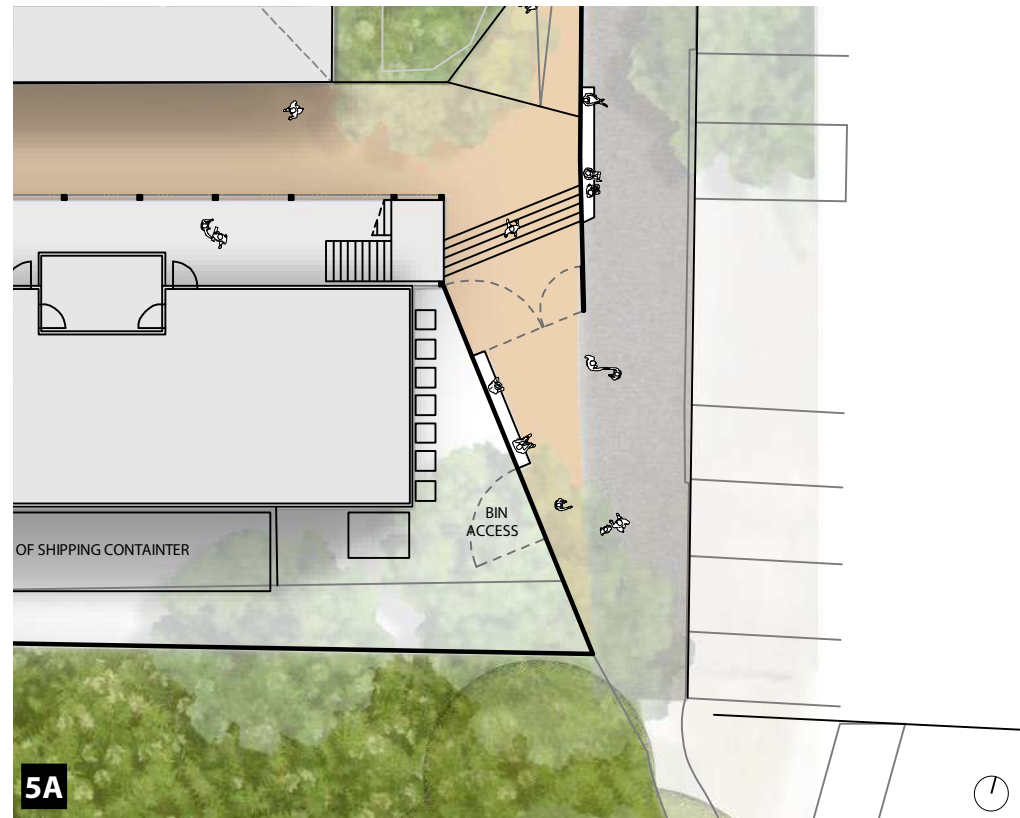


DEDICATED LAB SPACE DESIGNED FOR STEM SUBJECTS

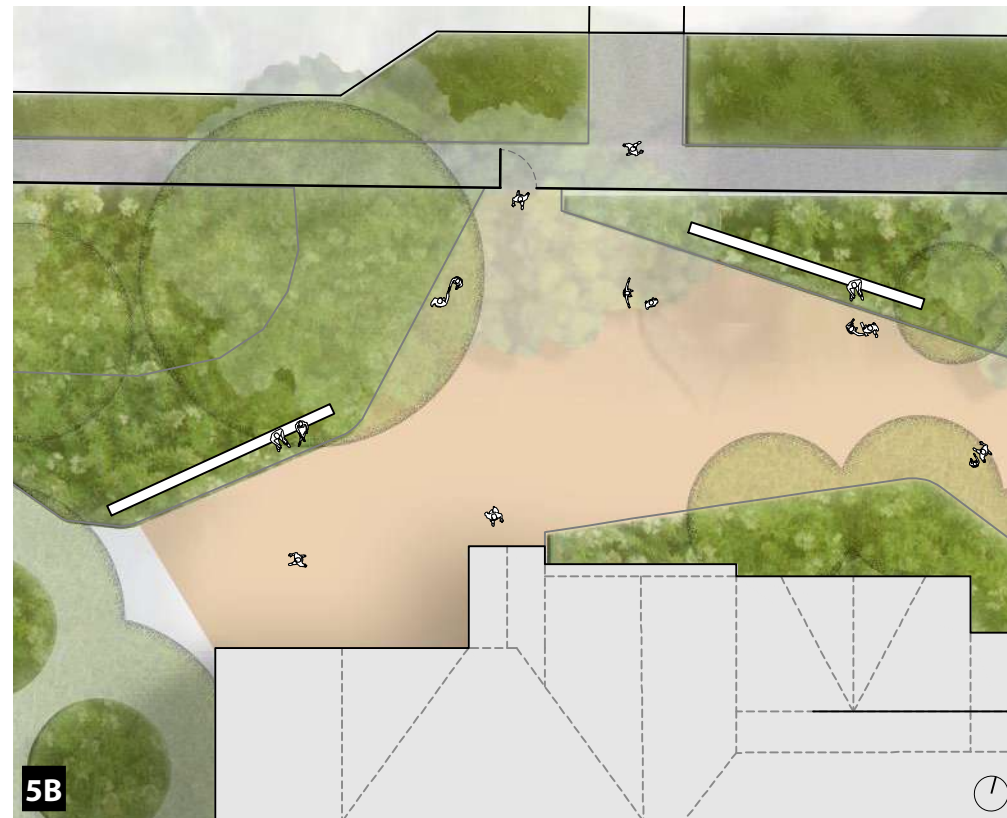


OUTDOOR FACILITATED LEARNING

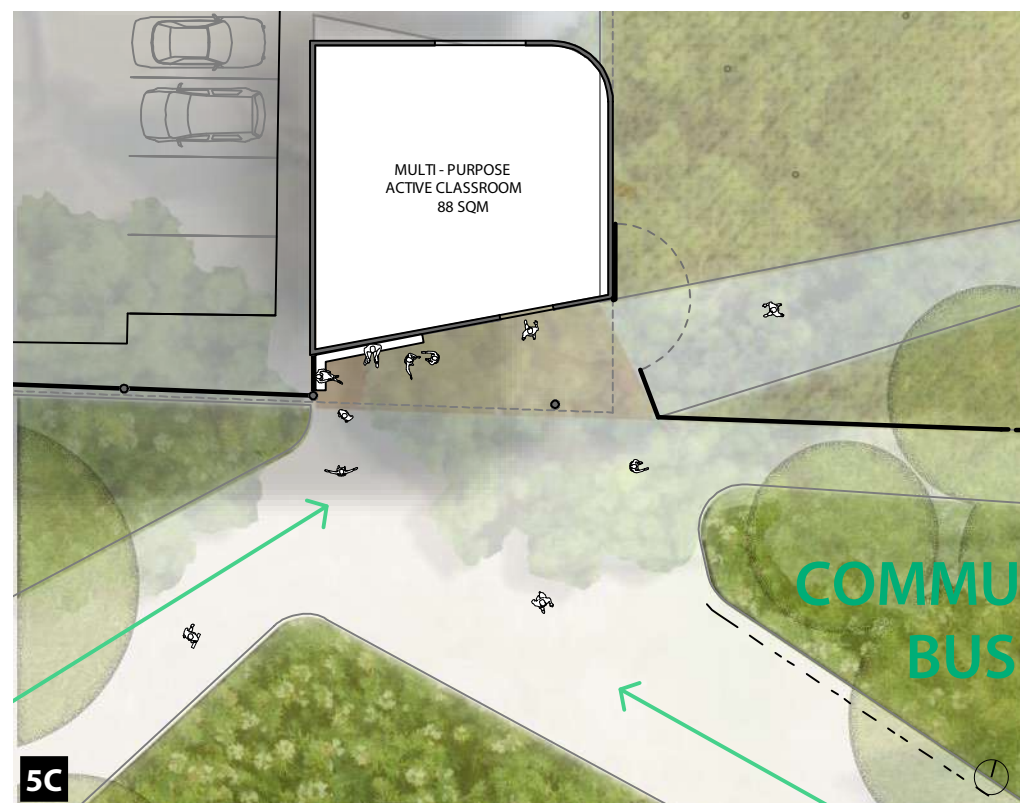
5 ENTRANCES



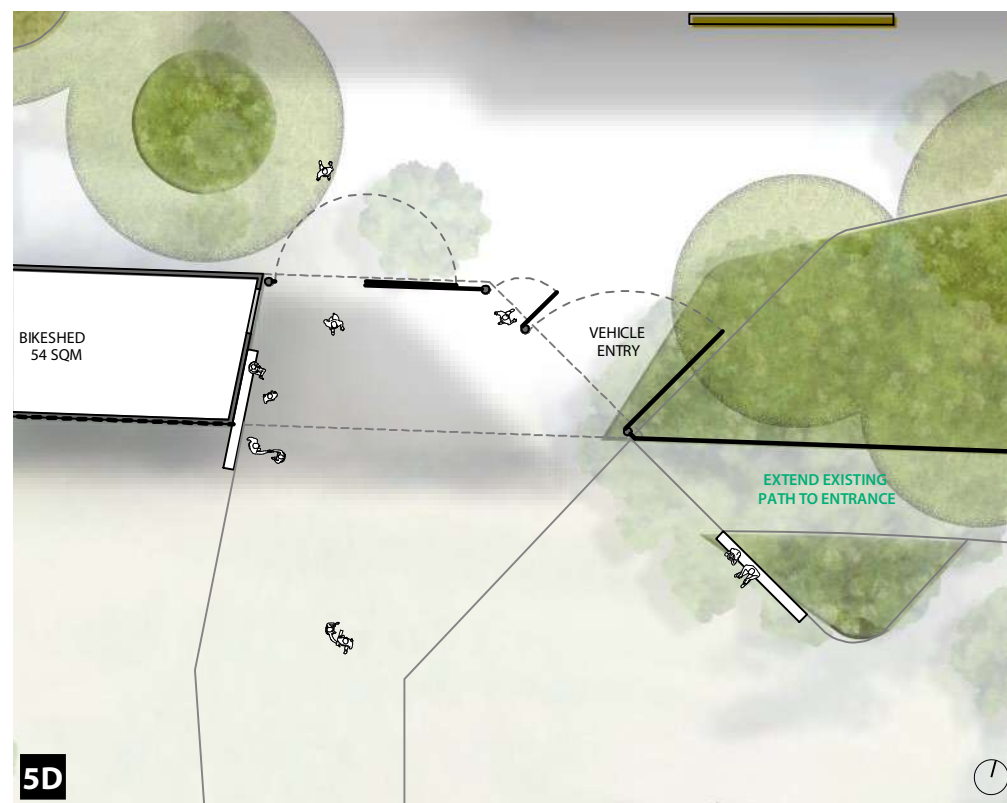
NEW RATHDOWNE STREET ENTRANCE



ORIGINAL BRUNSWICK ROAD ENTRANCE



COMMUNITY BUILDING PARK ENTRANCE



GATE HOUSE PARK ENTRANCE



HAVING A GENEROUS SENSE OF ARRIVAL



GREEN POCKETS IMPROVE CIRCULATION AND PLACE

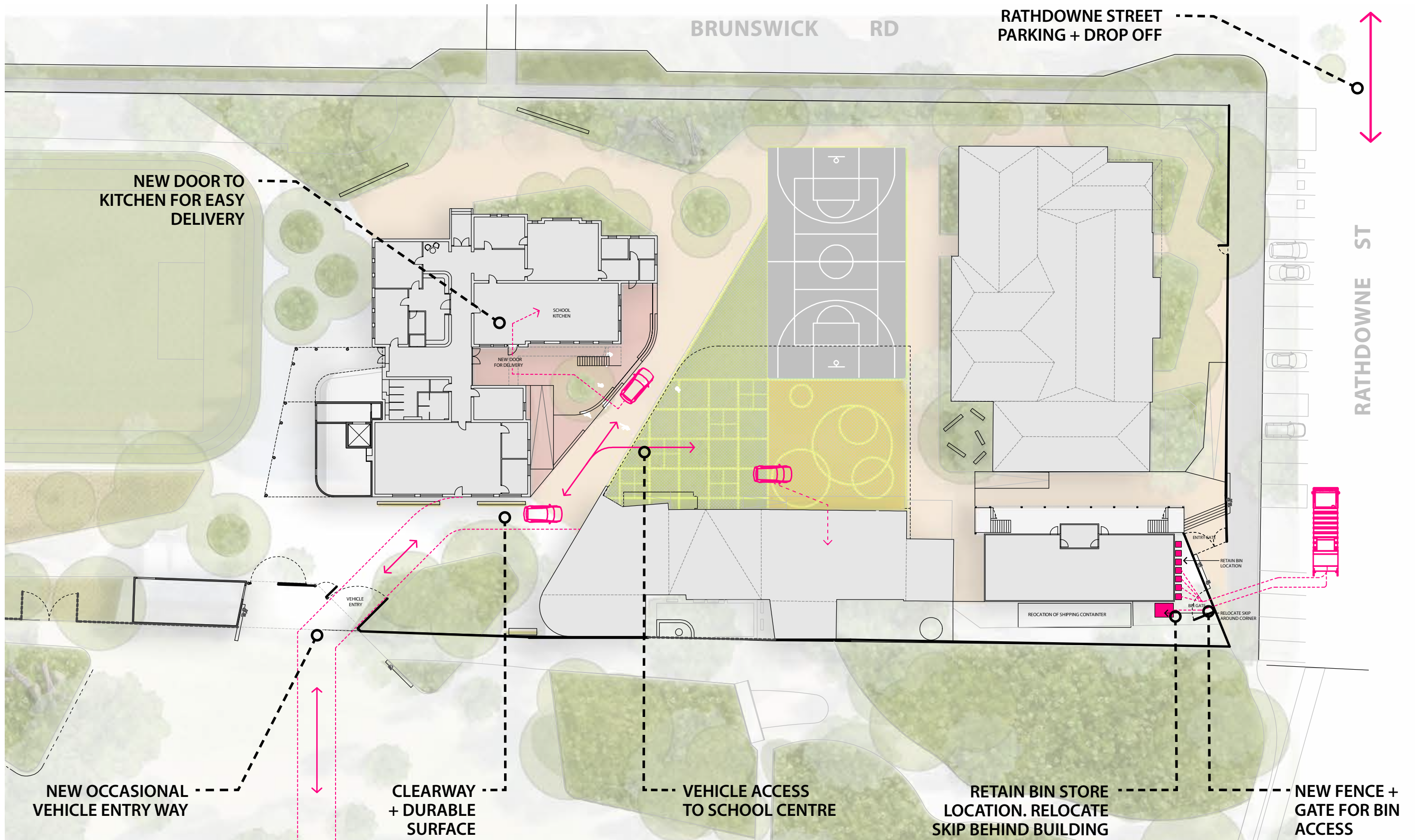


COMMUNITY BUILDING ENTRY



GATE HOUSE ENTRY

6 BIN STORE + VEHICLE ACCESS



PROPOSED BUILDINGS

7 8 9



NEW BUILDINGS TO HINT AT HERITAGE LANGUAGE WHILST CONTRASTING THROUGH MATERIALS



SMALLER FOOTPRINTS ENABLE GREATER CIRCULATION + POROSITY AT GROUND LEVEL



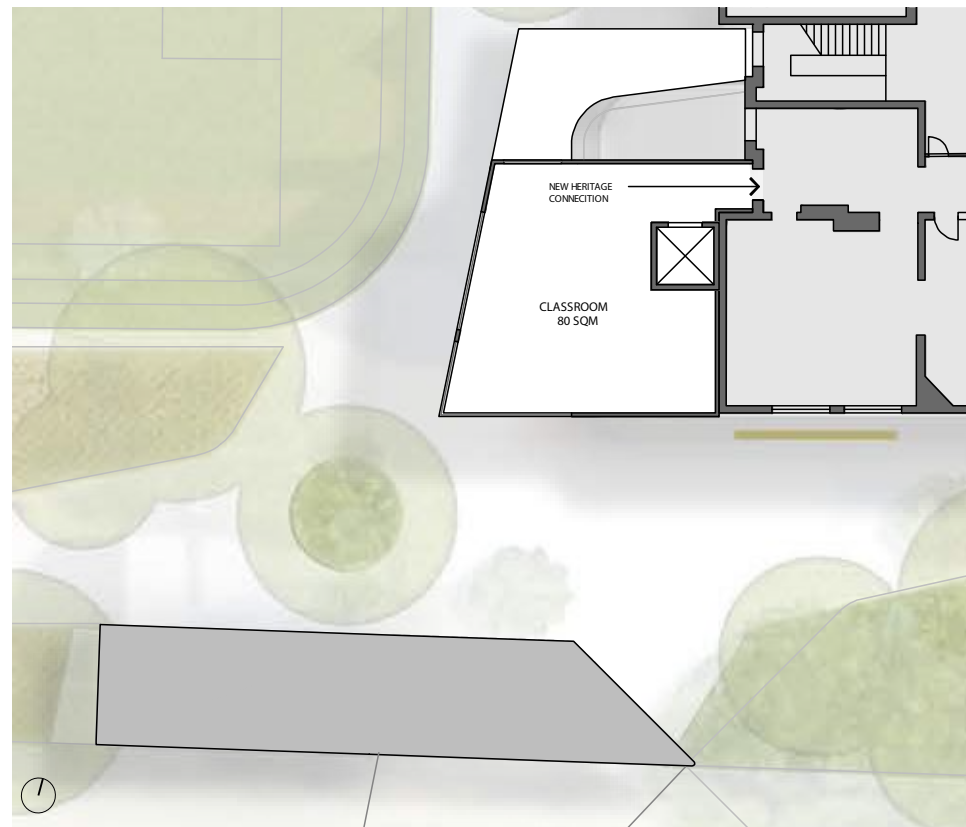
PLACE MAKING FACADES ENCOURAGE INTERACTION + GATHERING



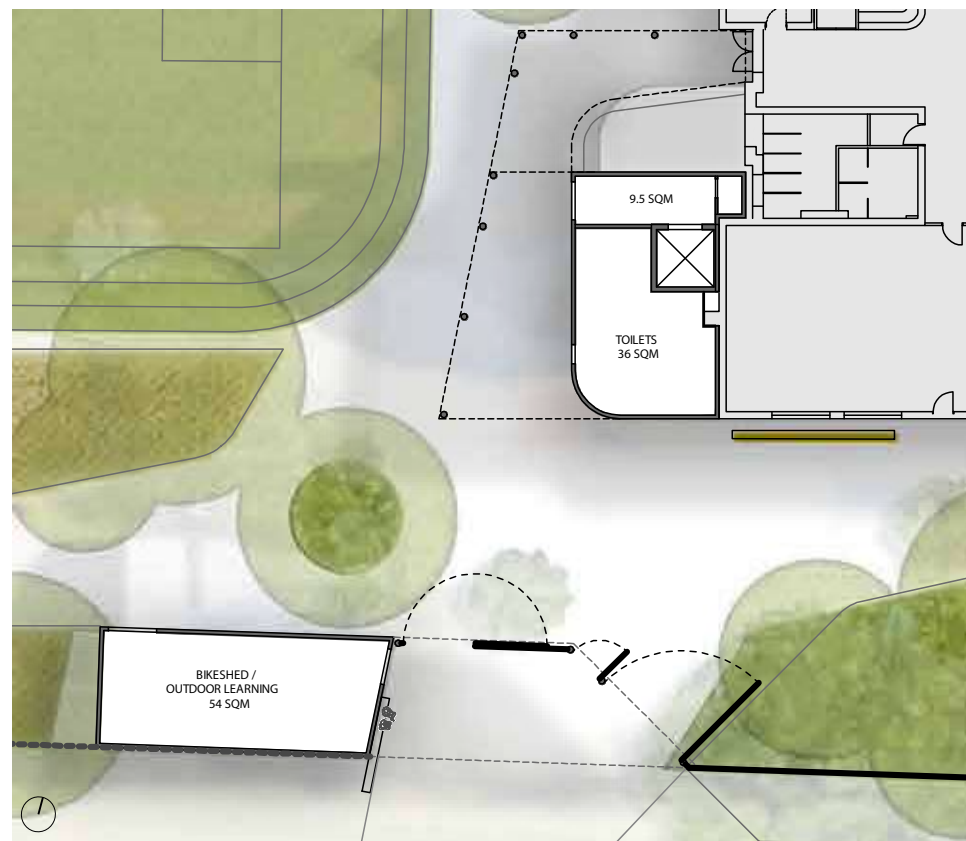
NEW BACKDROP TO THE PARK. SHIFTING ROOF LINES, COLOURFUL GEOMETRIES GIVE THE SCHOOL AN IDENTITY



7+8 NEW LEARNING BUILDINGS



FIRST FLOOR PLAN



GROUND FLOOR PLAN



HERITAGE ADDITION



DISPERSED FOOTPRINTS TO ENCOURAGE CONNECTIONS THROUGH



AXIS THROUGH TO DRUMMOND STREET CONNECTS BUILDINGS

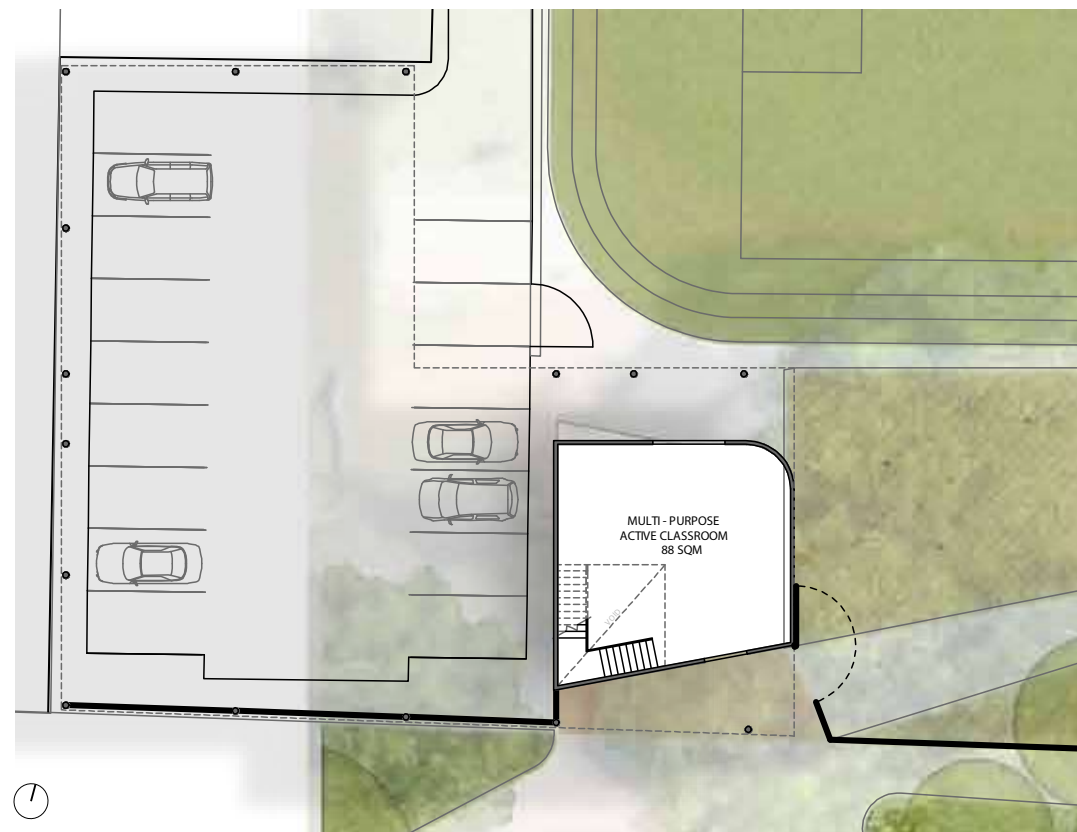


NEW BUILDINGS PICKING UP ON HERITAGE QUALITIES, WHILE CREATING A NEW CONNECTED INTERFACE TO THE PARK

9 NEW COMMUNITY BUILDING



FIRST FLOOR PLAN



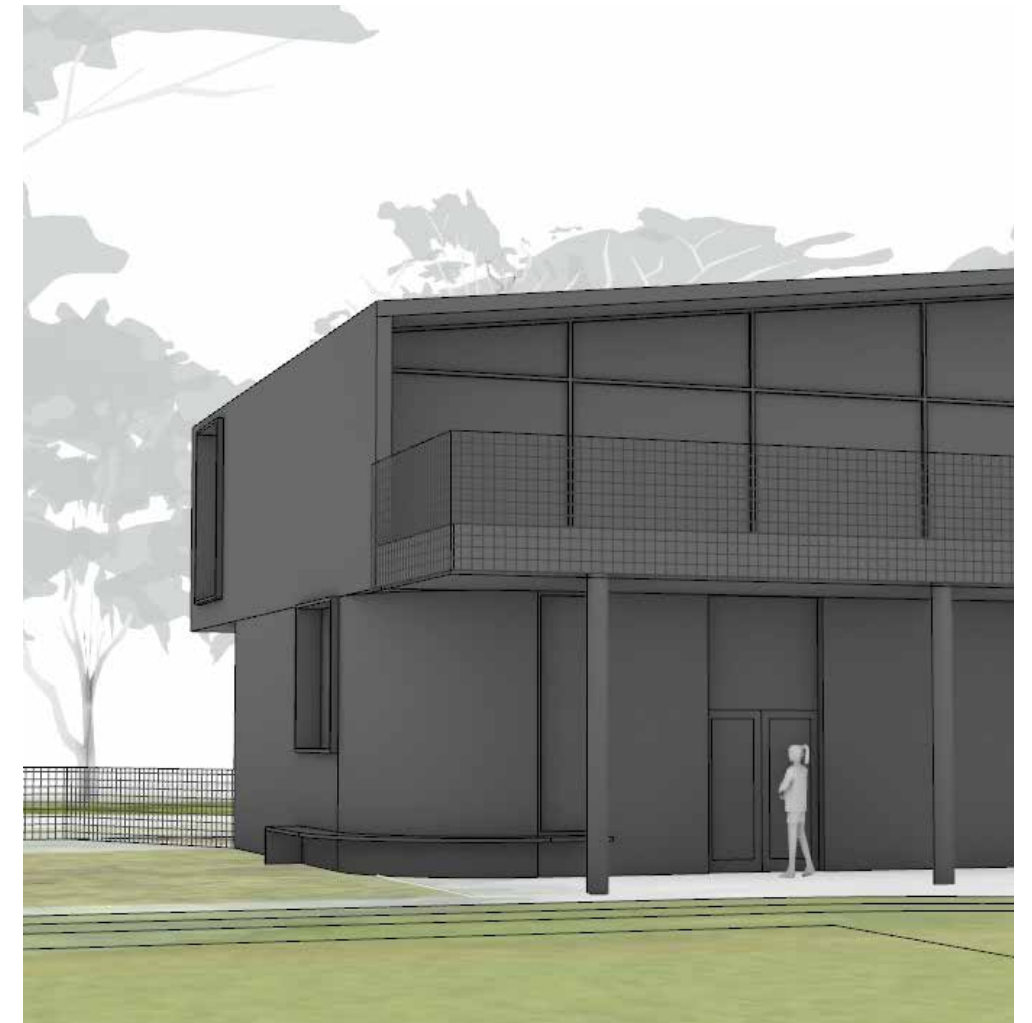
GROUND FLOOR PLAN



PARK ENTRANCE CONNECTS TO WIDER LANDSCAPE DESIGN



LINEAR PARK FACADE CONCEALS CARPARK WHILE OPENING UP ENTRY



SHARED FACILITIES WITH SCHOOL PROGRAMS ON GROUND FLOOR AND MIX USE ABOVE



ALTHOUGH SEPARATED LANDSCAPE AND CIRCULATION CONNECTS NEW SCHOOL BUILDINGS.

SEARLE X WALDRON ARCHITECTURE

STUDIO 4 / 107-113 GREY STREET
ST KILDA / VIC / 3182
INFO@SXWA.COM.AU
SXWA.COM.AU

CONTACT:
SUZANNAH WALDRON / DIRECTOR



CONTACT@BUSHPROJECTS.COM.AU
BUSHPROJECTS.COM.AU